



New Jersey Odyssey of the Mind

sponsored by Creativity Unlimited in New Jersey

nj.odysseyofthemind.org

Directions to 2010 Lighthouse Regional Tournament Ewing High School – March 6, 2010

From the North via NJ Turnpike

- Take Exit 7A for I-195 WEST.
- Get onto I-195 WEST and take it to EXIT 60 (at mile 0) for I-295 N (towards Pennsylvania)
- I-295 NORTH turns into I-95 SOUTH at US-Rt 1 (Exit 67)
- Proceed another approx 4 miles and get off at EXIT 4 – NJ RT 31 (Ewing/Pennington)
- At the top of the ramp, turn LEFT onto NJ RT 31
- Go to the 8th light and turn RIGHT onto OLDEN AVE
- Take OLDEN AVE to the end and turn RIGHT onto PARKWAY AVE
- About 100 feet down, Ewing High School will be on your LEFT.

From the South via I-295

- Go NORTH on I-295
- I-295 NORTH turns into I-95 SOUTH at US-Rt 1 (Exit 67)
- Proceed another approx 4 miles and get off at EXIT 4 – NJ RT 31 (Ewing/Pennington)
- At the top of the ramp, turn LEFT onto NJ RT 31
- Go to the 8th light and turn RIGHT onto OLDEN AVE
- Take OLDEN AVE to the end and turn RIGHT onto PARKWAY AVE
- About 100 feet down, Ewing High School will be on your LEFT.

From the East via I-195

- Take I-195 WEST to EXIT 60 (at mile 0) for I-295 N (towards Pennsylvania)
- I-295 NORTH turns into I-95 SOUTH at US-Rt 1 (Exit 67)
- Proceed another approx 4 miles and get off at EXIT 4 – NJ RT 31 (Ewing/Pennington)
- At the top of the ramp, turn LEFT onto NJ RT 31
- Go to the 8th light and turn RIGHT onto OLDEN AVE
- Take OLDEN AVE to the end and turn RIGHT onto PARKWAY AVE
- About 100 feet down, Ewing High School will be on your LEFT.

From the North via US RT 1

- Follow US RT 1 SOUTH past the Quakerbridge Mall.
- Stay in the RIGHT lane and take I-95 SOUTH (towards Pennsylvania)
- Proceed another approx 4 miles and get off at EXIT 4 – NJ RT 31 (Ewing/Pennington)
- At the top of the ramp, turn LEFT onto NJ RT 31
- Go to the 8th light and turn RIGHT onto OLDEN AVE
- Take OLDEN AVE to the end and turn RIGHT onto PARKWAY AVE
- About 100 feet down, Ewing High School will be on your LEFT.

From Hunterdon County

- Take US-202/NJ-31 SOUTH to the exit for NJ-31 SOUTH towards Trenton.
- Follow NJ-31 SOUTH through the Pennington Circle (a Shop Rite is on the circle)
- Cross over I-95, take the 8th light (after I-95) and turn RIGHT onto OLDEN AVE
- Take OLDEN AVE to the end and turn RIGHT onto PARKWAY AVE
- About 100 feet down, Ewing High School will be on your LEFT

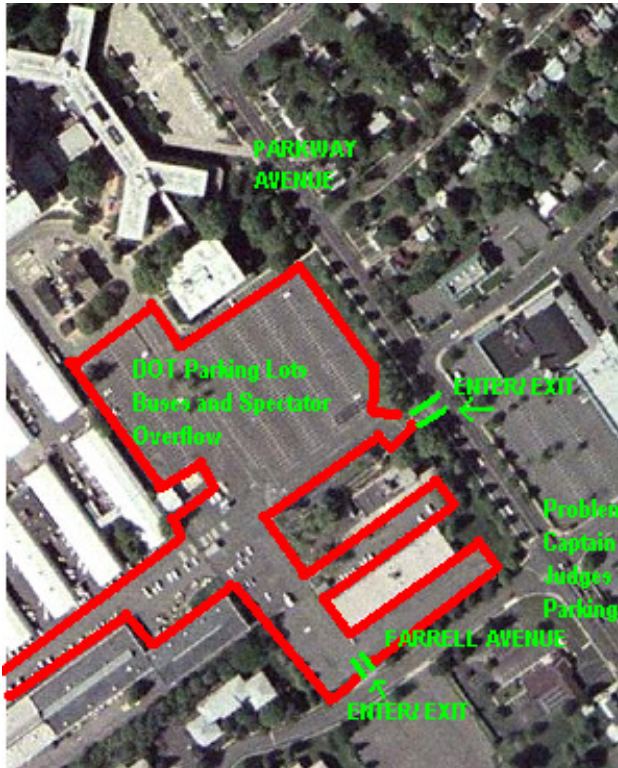


New Jersey Odyssey of the Mind

sponsored by Creativity Unlimited in New Jersey

nj.odysseyofthemind.org

Parking Information for 2010 Lighthouse Regional Ewing High School – March 6th, 2010

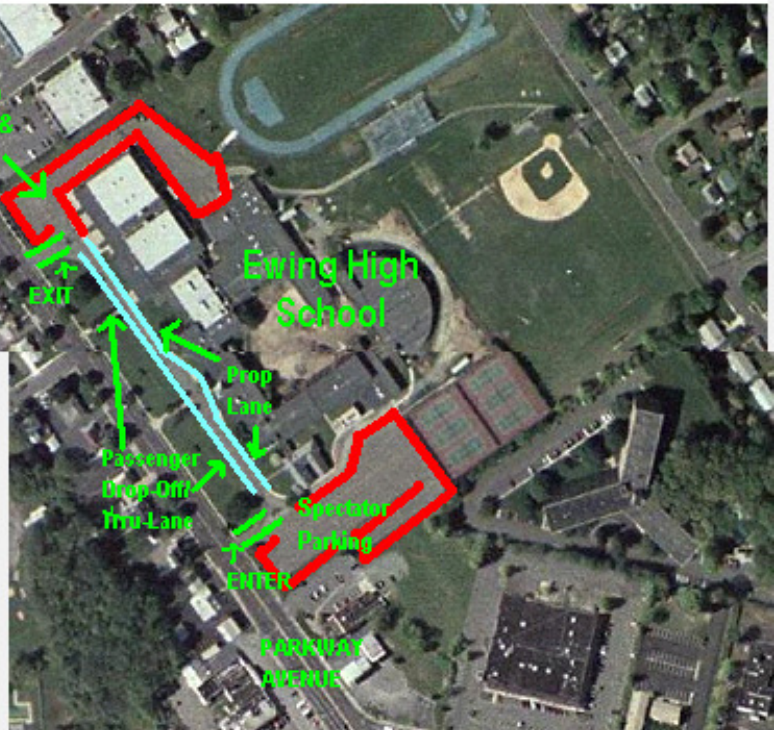


EWING HIGH SCHOOL PARKING MAP

Problem Captains and Judges can park in the lot by the GYM marked, "Problem Captain & Judges Parking".

Spectators may park in the assigned "Spectator Parking" Lot; if more parking is needed, spectators may park in the DOT Parking Lots (0.1 - 0.3 miles from the school on the Left side of Parkway Ave.)

Buses MUST park in the LARGE DOT lot. They may drop off props and students in the Prop Lane (closest to the school) or passengers in the Passenger Drop-Off/ Thru Lane (Left Bus lane).



THANK YOU FOR ATTENDING ODYSSEY OF THE MIND'S LIGHTHOUSE REGIONAL TOURNAMENT AT EWING HIGH SCHOOL.

WE APPRECIATE YOUR CONTINUED EFFORTS IN HELPING US KEEP OUR SCHOOL AND FACILITIES SAFE AND CLEAN!

GOOD LUCK!!!

Ewing High School
900 Parkway Avenue
Ewing, NJ 08618